



**GARDEN OFFICE**  
@ENCORP STRAND



# Exclusive Sustainable Garden Offices @ Kota Damansara

# Integrated Community Redefined

**The Residence**

The 40 storey tower offers the discerning guest with single bedroom and double bedroom options along with a number of duplex and penthouse suites. All residences have access to a private pool and the sky garden.

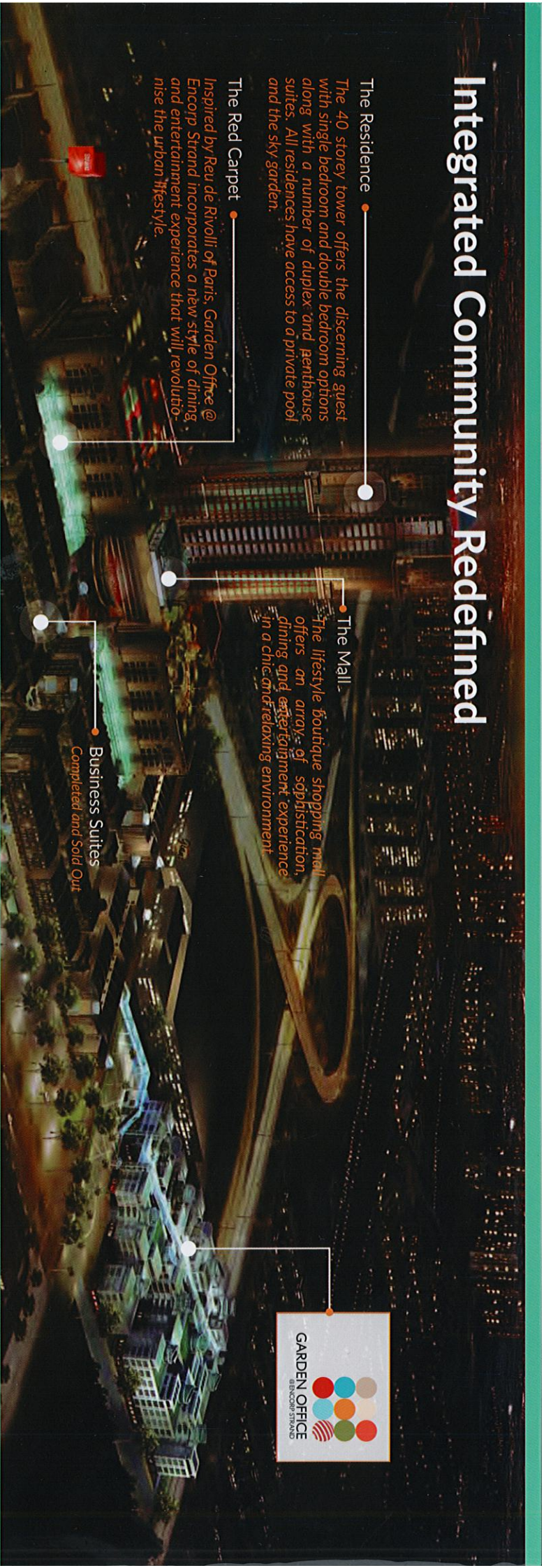
**The Red Carpet**

Inspired by *Reu de Rivollit of Paris: Garden Office @ Encorp Strand* incorporates a new style of dining and entertainment experience that will revolutionise the urban lifestyle.

**The Mall**

The lifestyle boutique shopping mall offers an array of sophistication, dining and entertainment experience in a chic and relaxing environment.

**Business Suites**  
Completed and Sold Out



## With Intelligent Technology and Eco-friendly Features, Let's Step Into Your Own Sustainable Office Lot Now.

Garden Office @ Encorp Strand is an intelligent combination of design and technology to upgrade the conventions of work and relaxation.

A core value throughout the design process of Garden Office is that life should be lived well according to green ideas - a notion embodied in the philosophy of a 'Green Living Oasis'.

Such ergonomically inspired orientation and configuration of building blocks create a vibrant platform for the unifying concept as an environment to live, learn, work and play. An exquisite landscaped plaza makes socializing for work or business a pleasure amongst the natural alfresco style.



Roof-top gardens interconnected by **Sky Bridges**

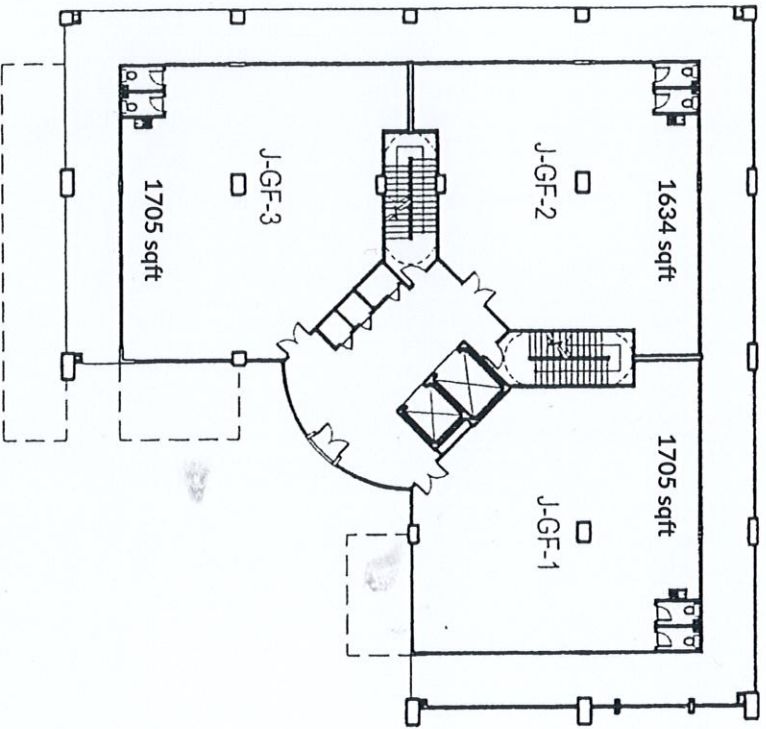


Lush landscaping creates an extraordinary **Roof-Top Garden**

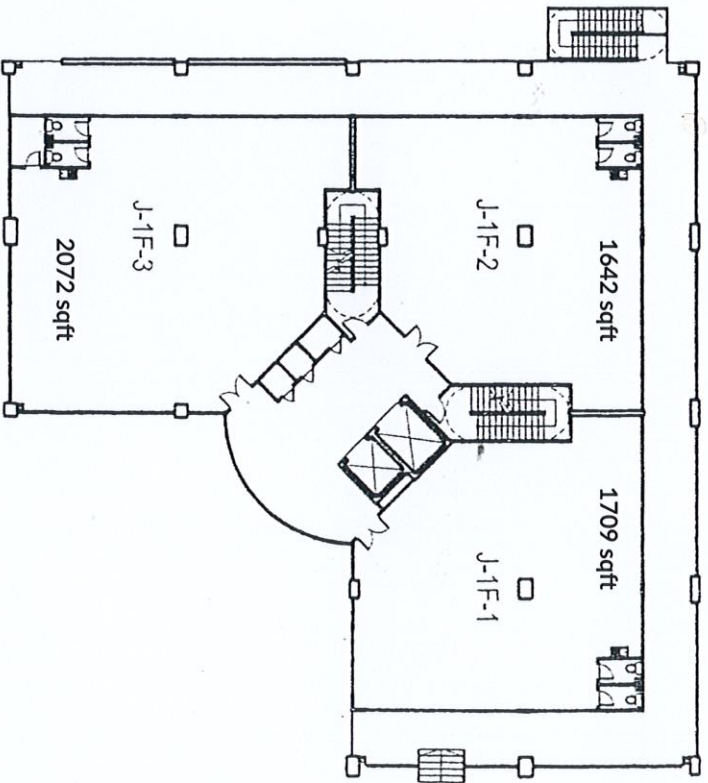


The Red Carpet - Exquisite amenities within reach

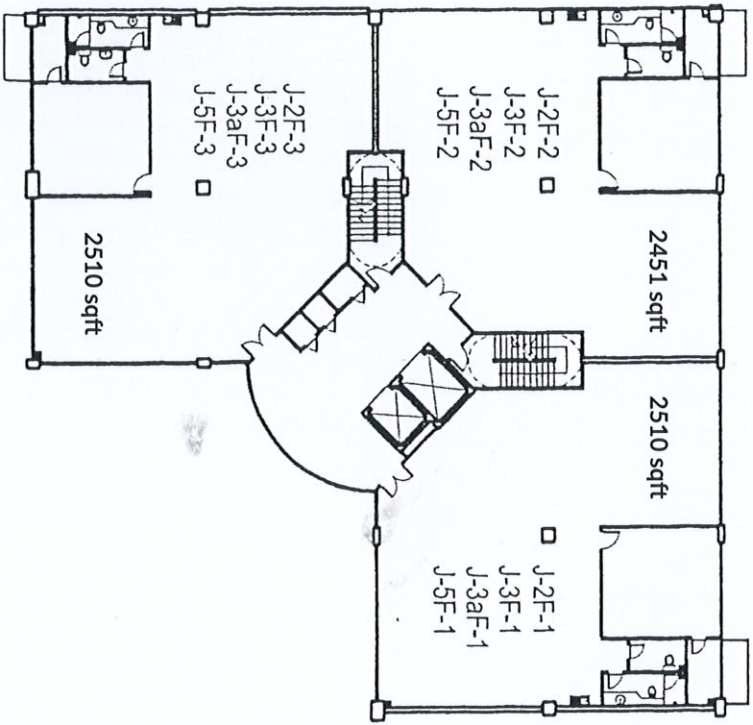
# Block J Floor Plans



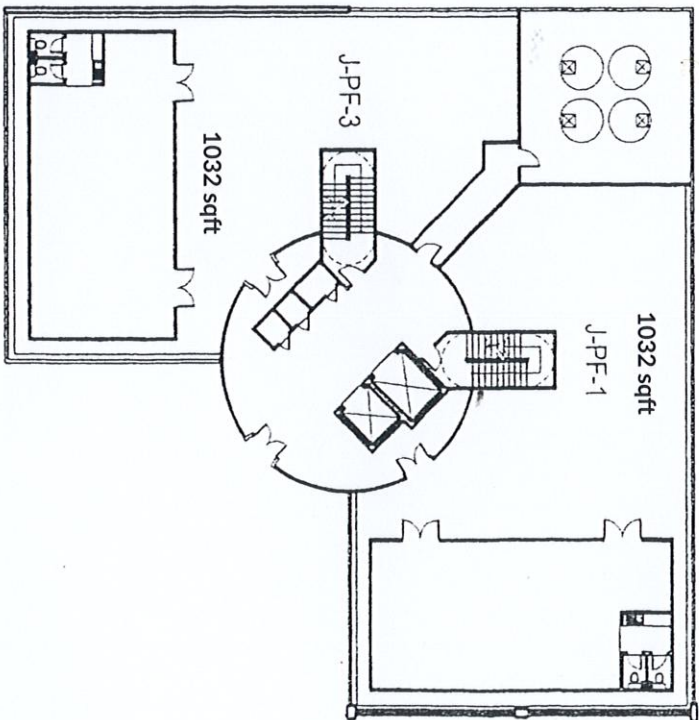
Ground Floor



1st Floor



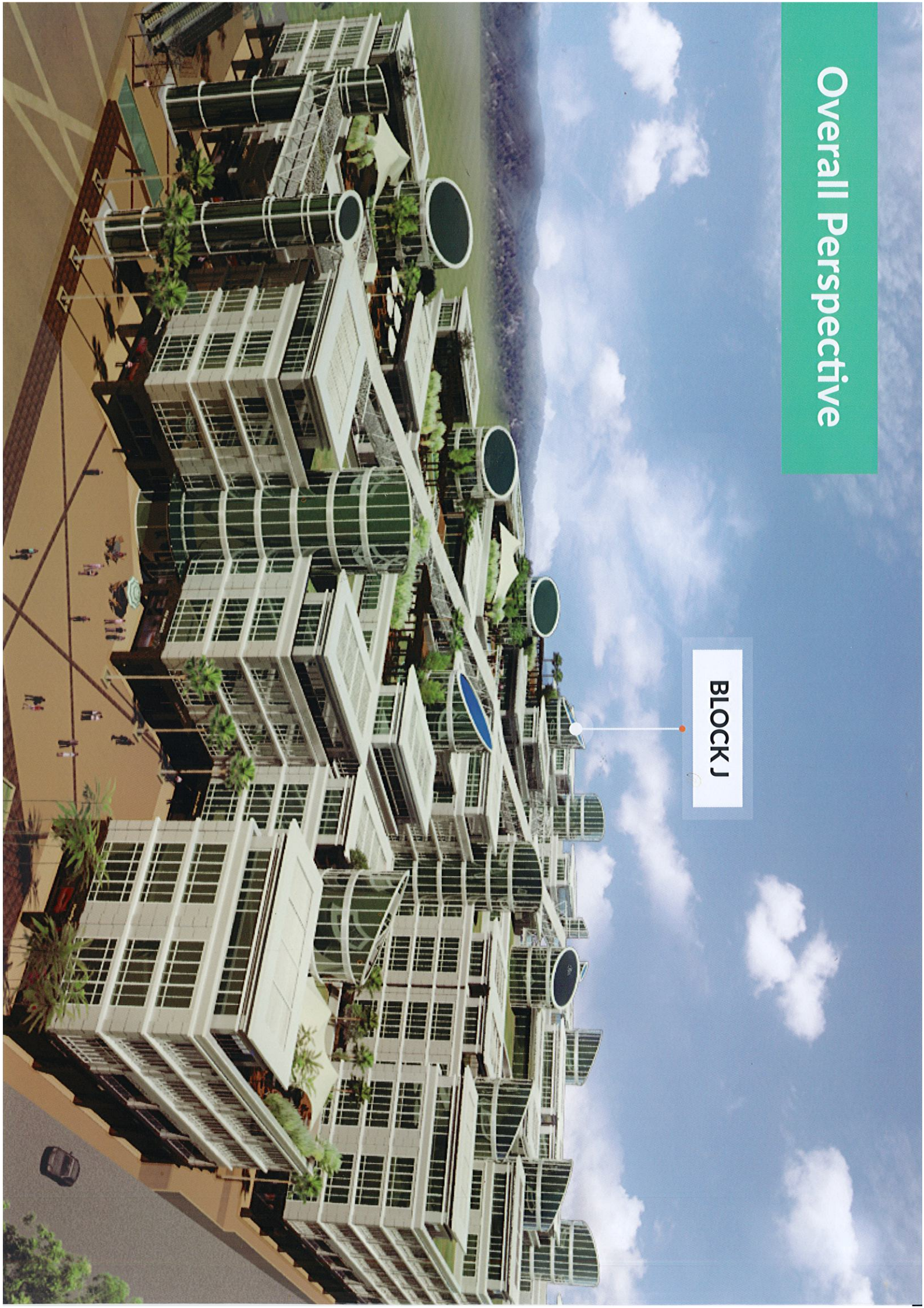
2nd - 3rd Floor



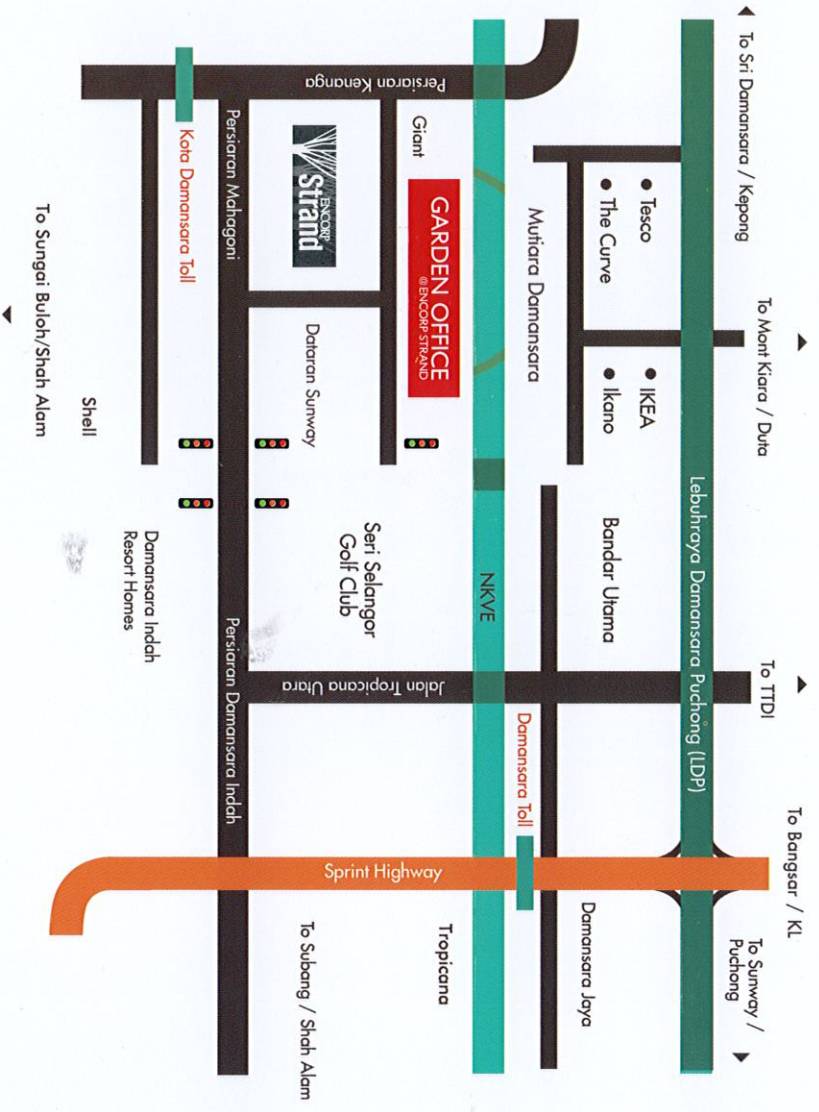
Penthouse

# Overall Perspective

BLOCK J



# Location Map



For more information, kindly call :

- 016 251 0113
- 013 939 0310
- 013 342 1098
- 013 393 8183
- 019 303 4342
- 013 323 2158
- 011 1429 3079

[www.pkns-property.com](http://www.pkns-property.com)

A Joint Venture Development by :



**Selangor State Development Corporation**  
 Central Region Sales Office  
 Block B, Laman PKNS,  
 No. 2, Jalan Indah 14/8, Section 14,  
 40000 Shah Alam, Selangor Darul Ehsan.  
 Tel: 03 5525 0300

All information and specifications are current at the time of printing and are subject to change as required and cannot form part of the contract. All plans are subject to any amendments approved or may be approved by the relevant authority. Artist's renderings and pictures are impression only while illustration of interiors are only decor suggestions and none can be regarded as a representation of facts. Floor areas are approximate measurements and subject to final survey.